

# N50 & NG50

Estimated size: 4 Mb

Assembly: 3.6 Mb in 39 contigs

Final  
assembly

Contig 1: 1.5 Mb  
Contig 2: 1.1 Mb  
Contig 3: 0.9 Mb  
Contig 4: 15 kb  
Contig 5: 8 kb  
Contig 6: 1 kb  
Contig 7: 780 bp  
Contig 8: 541 bp

← N50: 1.1 Mb. Contigs equal or larger than this represent 50% of the total assembly size; (L50: 2)

NG50: Similar to N50, but based on estimated genome size;

Size cutoff: 500bp

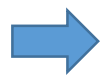
Discarded  
contigs

Contig 9: 451 bp  
Contig 10: 325 bp  
Contig 11: 312 bp  
Contig 12: 301 bp  
...  
Contig 39: 71 bp

Contigs smaller than cutoff size are not reported

# Kmer distribution

Reads



K-mer count table

| K-mer | Copies |
|-------|--------|
|-------|--------|

|         |     |
|---------|-----|
| AAAAAAA | 131 |
|---------|-----|

|         |    |
|---------|----|
| AAAAAAC | 26 |
|---------|----|

|         |   |
|---------|---|
| AAAAAAG | 1 |
|---------|---|

|         |    |
|---------|----|
| AAAAAAT | 12 |
|---------|----|

|         |    |
|---------|----|
| AAAAACA | 26 |
|---------|----|

|         |   |
|---------|---|
| AAAAACC | 1 |
|---------|---|

|         |    |
|---------|----|
| AAAAACG | 26 |
|---------|----|

|         |   |
|---------|---|
| AAAAACT | 1 |
|---------|---|

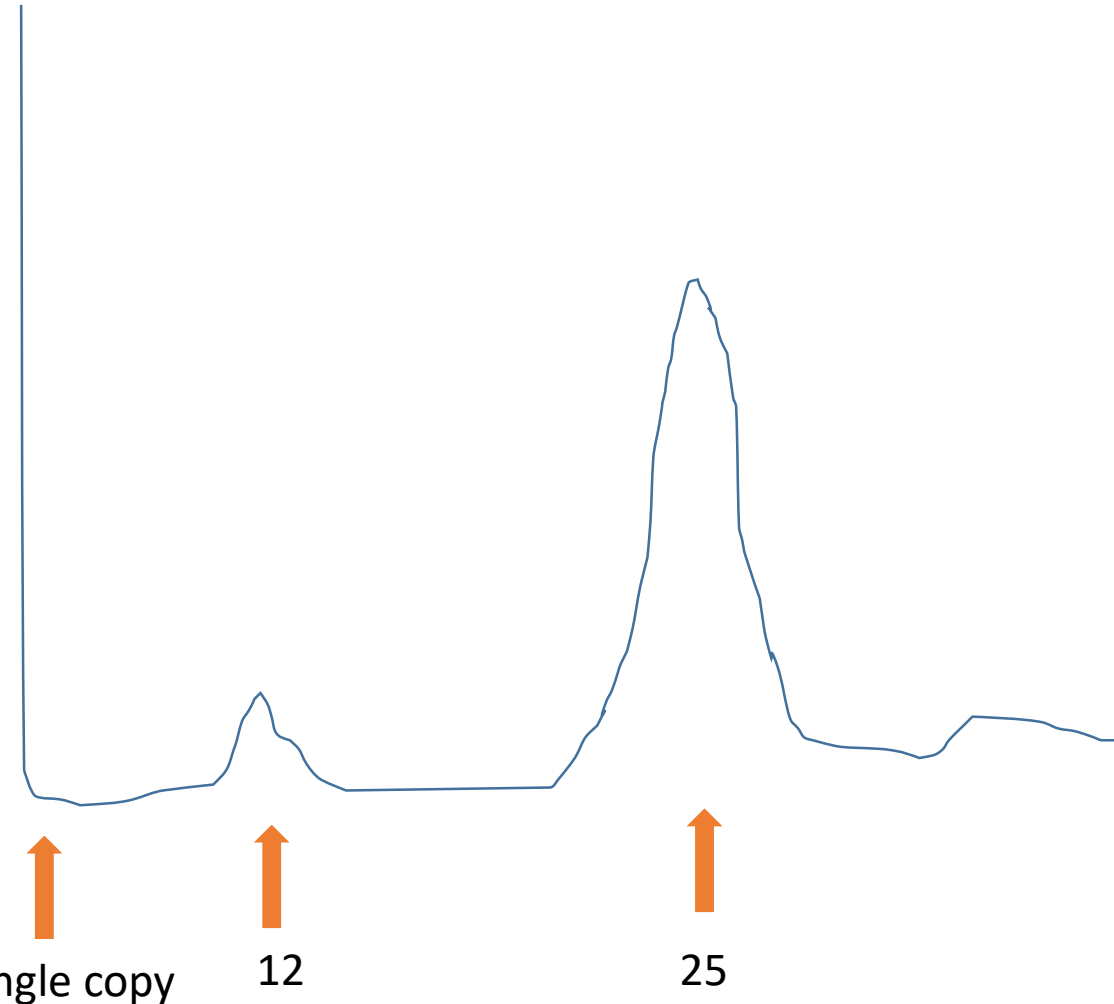
|         |    |
|---------|----|
| AAAAAGA | 24 |
|---------|----|

|         |    |
|---------|----|
| AAAAAGC | 25 |
|---------|----|

|         |   |
|---------|---|
| AAAAAGG | 1 |
|---------|---|

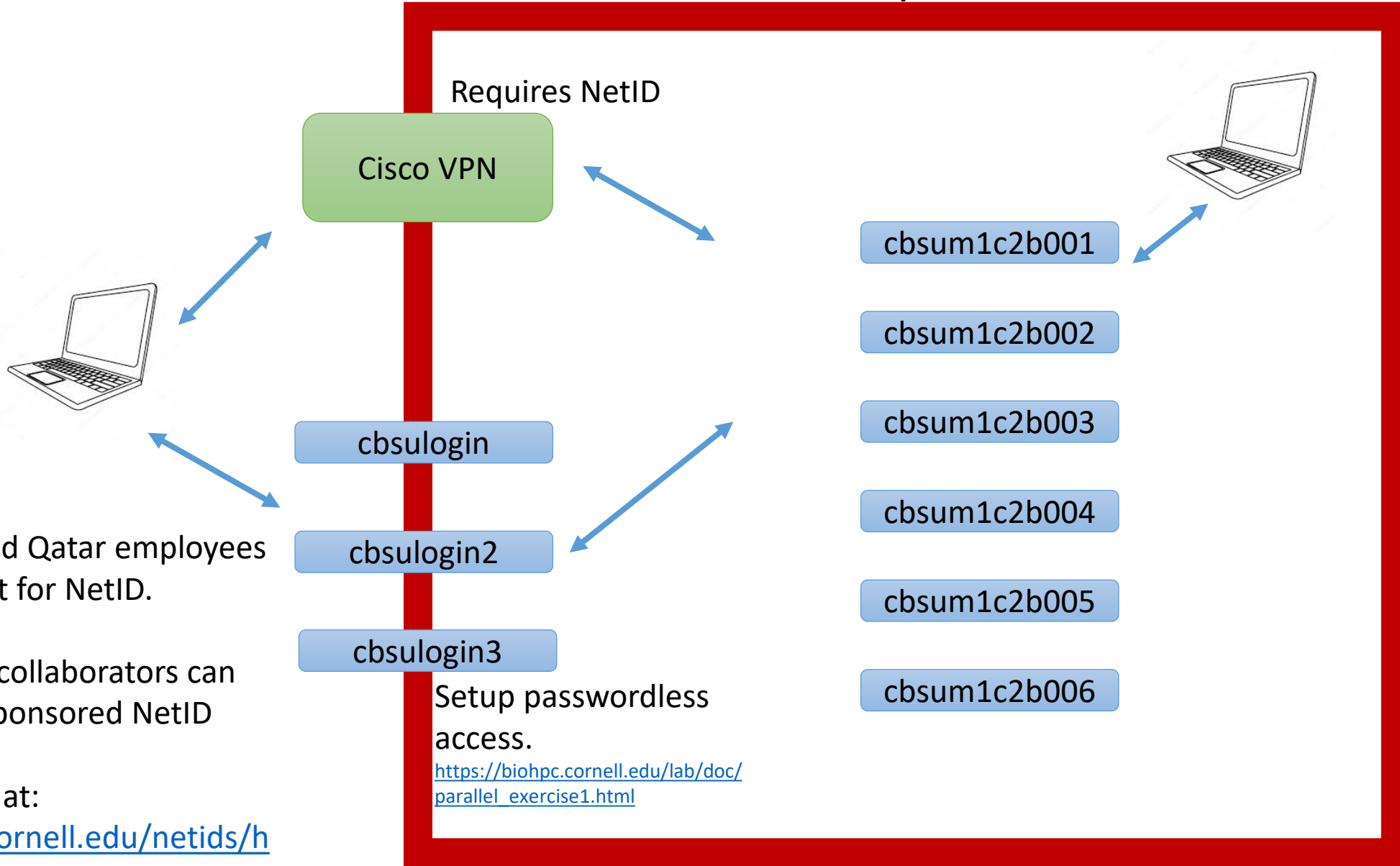
...

|         |     |
|---------|-----|
| TTTTTTT | 212 |
|---------|-----|



# Connection to BioHPC computers

## Ithaca Campus Firewall



All Weill and Qatar employees can request for NetID.

All Cornell collaborators can apply for sponsored NetID

See details at:

<https://it.cornell.edu/netids/how-request-sponsored-netid>

# Storage

**/workdir**: physically located on each BioHPC computer

**/home**: shared network drive, do not compute large files directly



## “screen” or “tmux”

If your software takes long time to finish, you need to run it under “screen” persistent session.